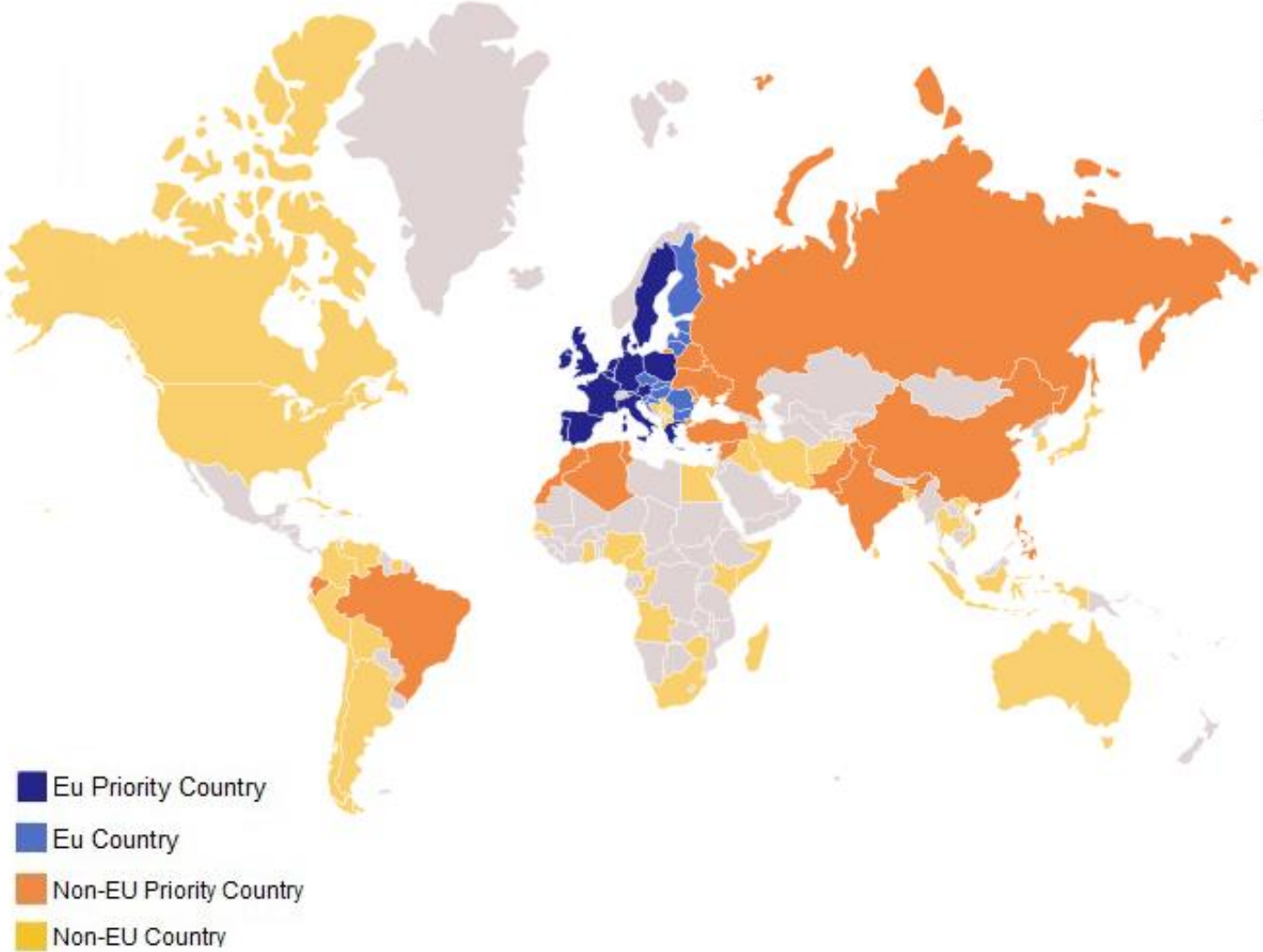


## **INTERACT Survey**

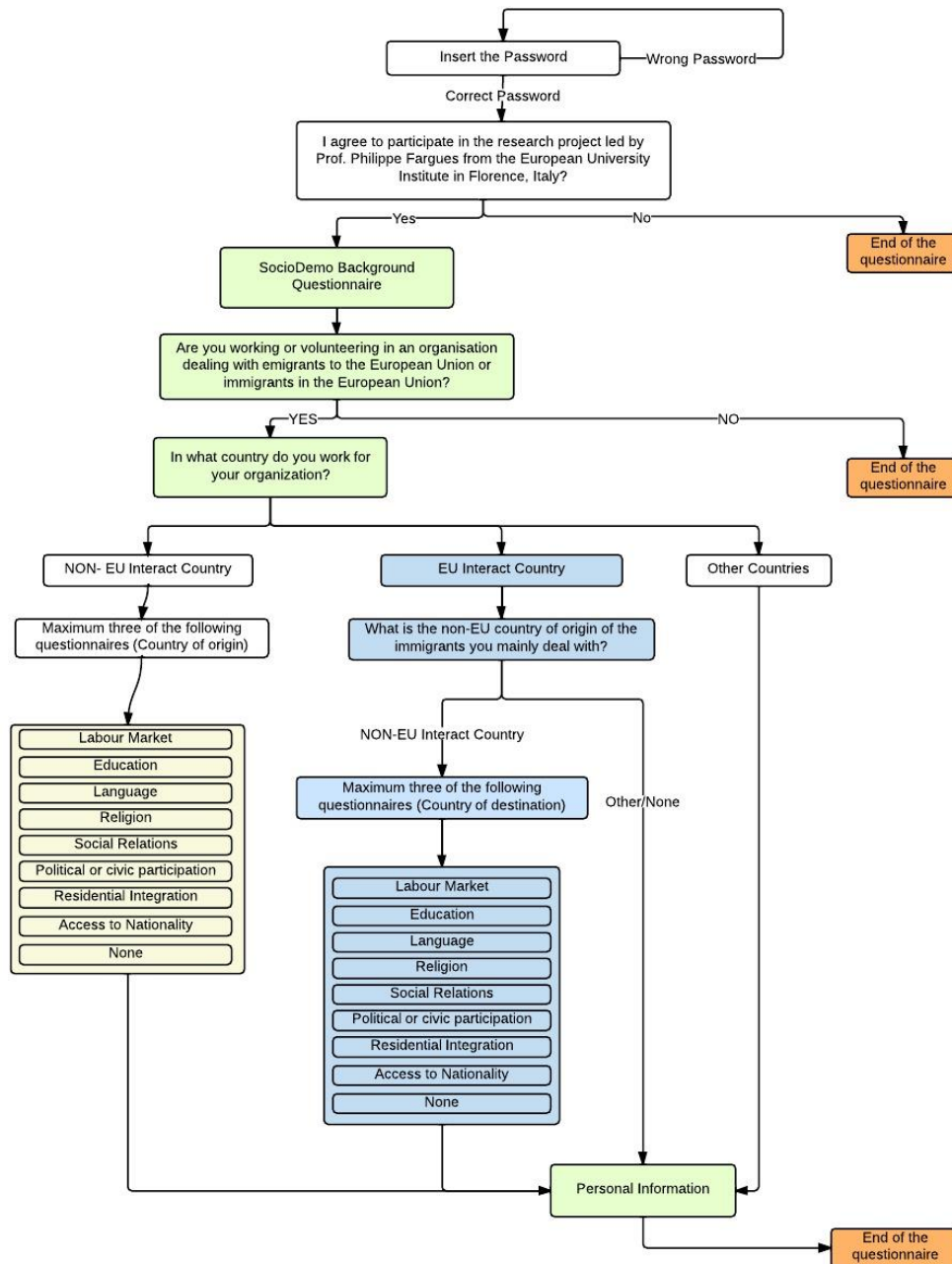
Recent research development in migration studies have shown how important it is to consider multiple actors both at origin and destination when we are about to study migrants' integration processes. In light of these developments, the INTERACT survey provides a new tool to research migrant integration. Its novelty lies in a cross-national approach in studying civil society organisations at both destination and origin as actors that take part in migrant integration in the EU destination countries. Upon completion the survey gathered over 900 responses from diverse types of organisations working predominantly (but not only) in employment, education, language and social relations dimensions of integration. These organisations had different reach, but their voices give us a better understanding of how they support migrants in their efforts to integrate in the EU. Although the exploratory character of the survey does not allow making generalisations to the whole population of civil society organisations, it sheds light onto how these actors' activities impact migrant integration between origin and destination, and how organisations perceive states of origin and their policies in the context of day-to-day reality of migrant incorporation into the receiving society.

**Figure 1: INTERACT Countries of destination and of origin**



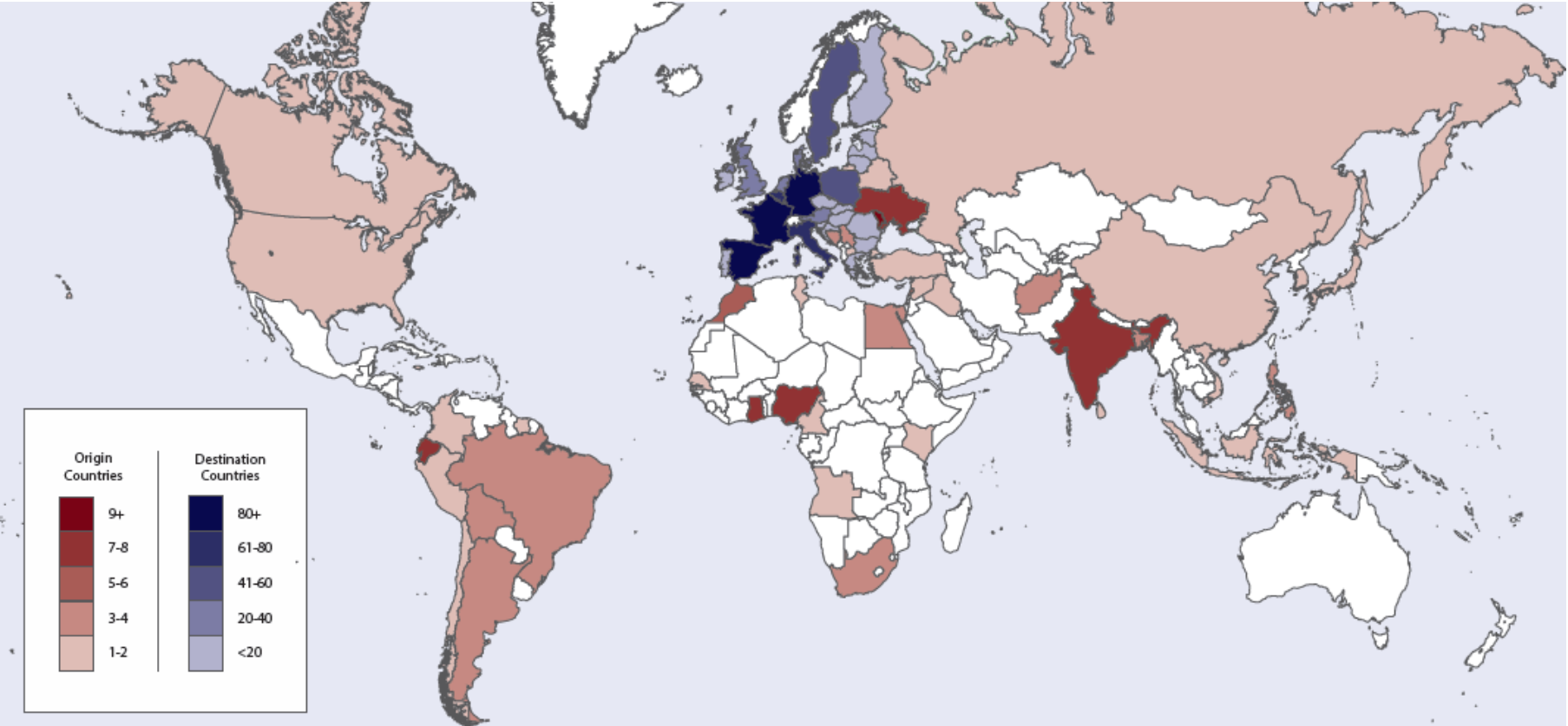
Source: INTERACT team

**Figure 2: INTERACT Survey Structure**



Source: INTERACT team

**Figure 3: Number of responses to the INTERACT survey by country**



Source: INTERACT survey

**Table 1: Number of responses by country of destination (countries' list in decreasing order)**

<b>Destination country</b>	<b>Number of responses</b>
Spain, Germany, France, Italy, Belgium	64-97
Poland, Sweden, Netherlands, Denmark, UK, Austria	29-48
Greece, Finland, Portugal, Romania, Ireland	10-19
Luxembourg, Malta, Estonia, Bulgaria, Cyprus, Czech Republic, Latvia, Croatia, Hungary, Slovenia, Lithuania, Slovakia	2-8
<i>Total</i>	<i>774</i>

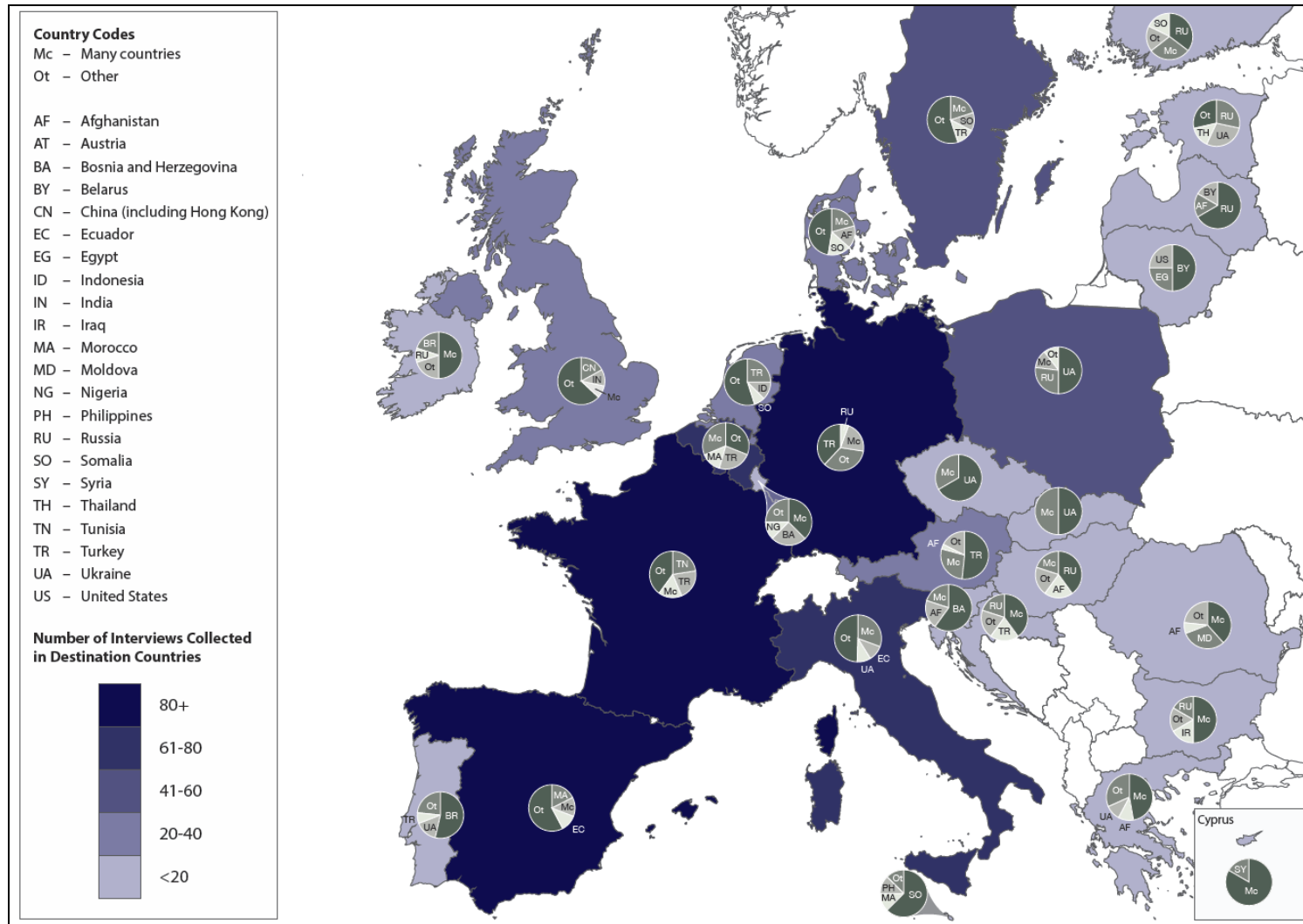
Source: INTERACT survey

**Table 2: Non-EU country of origin that the organisation mainly deals with (origin countries' list in decreasing order)**

<b>Non-EU country of origin</b>	<b>Number of responses</b>
Many countries, equally represented	166
Turkey	100
Ukraine, Russia, Morocco, Somalia, Tunisia, Ecuador, Brazil	21-57
Afghanistan, US, China (including Hong Kong), Senegal, Syria, Iraq, Moldova, Philippines, Bolivia, Ghana, India, Indonesia, Pakistan	10-17
Thailand, Argentina, Bosnia and Herzegovina, Chile, Peru, Colombia, Egypt, Nigeria, Belarus, Macedonia, Japan, Albania, Cuba, Algeria, Cameroon, Canada, Democratic Republic of the Congo, Iran, Kenya, Lebanon, Suriname, Venezuela, Angola, Madagascar, South Africa, South Korea, Australia, Bangladesh, Vietnam	1-9
<i>Total</i>	<i>773</i>

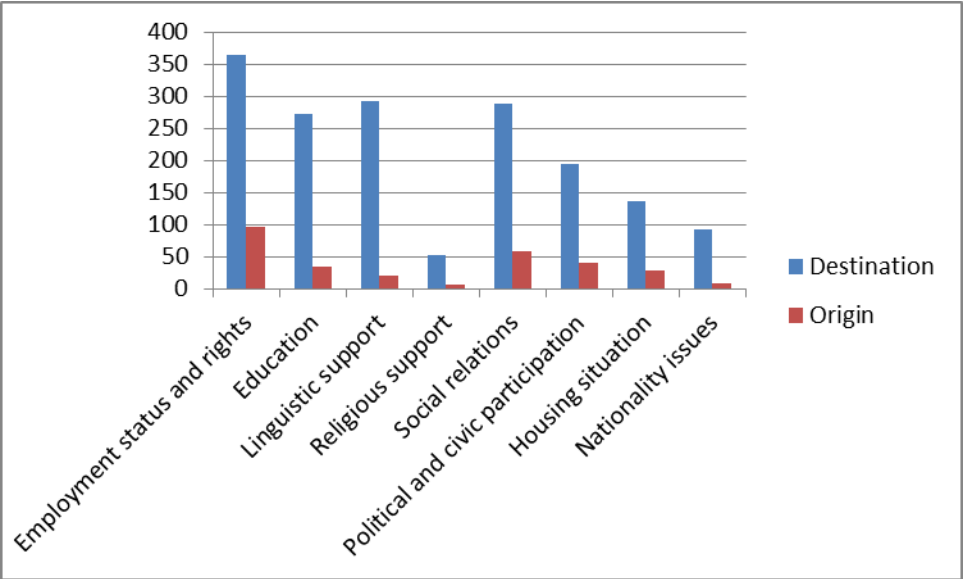
Source: INTERACT survey

**Figure 4: Migrant groups that the organisations operating in the EU deal with**



Source: INTERACT survey

**Figure 5: Areas of migrant integration addressed by the INTERACT survey by organisations in countries of origin and destination**



Source: INTERACT survey



**Table 3: Number of questionnaires selected by respondents in countries of origin and destination**

	Countries of destination	Countries of origin
1 questionnaire	208	43
2 questionnaires	213	31
3 questionnaires	352	62
4 questionnaires	1	
Total	774	136

Source: INTERACT survey

**Table 4: Combinations of integration activity chosen by the respondents in countries of origin and destination**

	Employment status and rights	Education	Linguistic support	Religious support	Social relations	Political and civic participation	Housing situation	Nationality issues
Employment status and rights		21	11	4	42	27	6	19
Education	101		6	2	12	5	2	1
Linguistic support	110	117		1	6	4	1	1
Religious support	9	20	16		3	1	1	2
Social relations	105	80	91	12		16	2	10
Political and civic participation	93	64	47	14	57		0	8
Housing situation	57	15	31	1	21	7		3
Nationality issues	76	29	35	1	28	19	19	
Colour legend	Country of origin				Country of destination			

Source: INTERACT survey

**Table 5: Organisation reach measured by the number of migrants who contacted the organisation asking for assistance regarding integration issues in any given integration dimension**

		Employment status and rights	Education	Linguistic support	Religious support	Social relations	Political and civic participation	Housing situation	Nationality issues
Countries of origin	0 to 30	36	12	8	3	26	19	3	11
	31 to 150	17	6	3	0	7	3	1	1
	151 to 600	7	4	0	1	2	3	1	2
	601 and more	9	1	1	2	8	4	0	4
Countries of destination	0 to 30	75	75	65	2	43	60	27	43
	31 to 150	100	74	82	11	80	32	27	20
	151 to 600	65	50	55	11	64	23	11	26
	601 and more	52	25	23	17	40	17	9	15

Source: INTERACT survey